

Constant Current Driver

- The housing is made from V0 flame retardant PC materials from COVESTRO.
- Small size and light weight. Wide range of applicable lamps.
- Class 2 LED driver, Safety Extra Low Voltage (LVLE).
- Innovative thermal management technology intelligently protects the life of the LED driver.
- Overheat, overload, short circuit protection and automatic recovery.
- Up to 50,000-hour life time.
- 5-year warranty (AiSHi capacitor).



The certification icon represents on-going certification applications only, and final certification qualification is subject to actual products.



Model	Output Current	Input Current	Input Power	Output Power Range	PF	Typical Efficiency	Output Voltage	No load Voltage
S-218-C42W300-1050CG-4B-UNI / S-218-C42W300-1050CG-4W-UNI / S-218-C42W300-1050CG-4G-UNI	300mA	0.12A	14.41W	3.00-12.60W	0.97	87.4%	10-42V	59V
	350mA	0.14A	16.80W	3.50-14.70W	0.97	88.0%	10-42V	59V
	400mA	0.16A	19.11W	4.00-16.80W	0.98	89.5%	10-42V	59V
	450mA	0.18A	21.45W	4.50-18.90W	0.98	88.8%	10-42V	59V
	500mA	0.21A	23.83W	5.00-21.00W	0.98	88.7%	10-42V	59V
	550mA	0.23A	26.19W	5.50-23.10W	0.98	88.8%	10-42V	59V
	600mA	0.25A	28.57W	6.00-25.20W	0.98	89.0%	10-42V	59V
	650mA	0.27A	30.95W	6.50-27.30W	0.98	88.9%	10-42V	59V
	700mA	0.30A	33.37W	7.00-29.40W	0.98	88.8%	10-42V	59V
	750mA	0.31A	35.75W	7.50-31.50W	0.99	88.7%	10-42V	59V
	800mA	0.33A	38.26W	8.00-33.60W	0.99	88.3%	10-42V	59V
	850mA	0.33A	38.81W	8.50-34.00W	0.99	88.0%	10-40V	59V
900mA	0.36A	41.18W	9.00-36.00W	0.99	88.0%	10-40V	59V	
950mA	0.37A	43.52W	9.50-38.00W	0.99	88.0%	10-40V	59V	
1000mA	0.39A	45.92W	10.00-40.00W	0.99	88.0%	10-40V	59V	
1050mA	0.41A	48.27W	10.50-42.00W	0.99	88.0%	10-40V	59V	

* Test result @120V, 50Hz, Full Load

Model	Output Current	Input Current	Input Power	Output Power Range	PF	Typical Efficiency	Output Voltage	No load Voltage
S-218-C42W300-1050CG-4B-UNI / S-218-C42W300-1050CG-4W-UNI / S-218-C42W300-1050CG-4G-UNI	300mA	0.08A	14.41W	3.00-12.60W	0.75	87.8%	10-42V	59V
	350mA	0.09A	16.72W	3.50-14.70W	0.78	88.4%	10-42V	59V
	400mA	0.10A	18.98W	4.00-16.80W	0.84	89.0%	10-42V	59V
	450mA	0.11A	21.26W	4.50-18.90W	0.86	89.4%	10-42V	59V
	500mA	0.12A	23.59W	5.00-21.00W	0.88	89.4%	10-42V	59V
	550mA	0.13A	25.89W	5.50-23.10W	0.89	89.6%	10-42V	59V
	600mA	0.14A	28.22W	6.00-25.20W	0.90	89.7%	10-42V	59V
	650mA	0.15A	30.53W	6.50-27.30W	0.92	89.8%	10-42V	59V
	700mA	0.15A	32.88W	7.00-29.40W	0.92	89.9%	10-42V	59V
	750mA	0.16A	35.23W	7.50-31.50W	0.93	90.0%	10-42V	59V
	800mA	0.17A	37.58W	8.00-33.60W	0.93	90.0%	10-42V	59V
	850mA	0.18A	38.15W	8.50-34.00W	0.93	89.7%	10-40V	59V
	900mA	0.19A	40.40W	9.00-36.00W	0.93	89.8%	10-40V	59V
	950mA	0.19A	42.64W	9.50-38.00W	0.94	89.8%	10-40V	59V
	1000mA	0.20A	44.94W	10.00-40.00W	0.94	89.8%	10-40V	59V
1050mA	0.21A	47.24W	10.50-42.00W	0.94	89.9%	10-40V	59V	

* Test result @230V, 50Hz, Full Load

Model	Output Current	Input Current	Input Power	Output Power Range	PF	Typical Efficiency	Output Voltage	No load Voltage
S-218-C42W300-1050CG-4B-UNI / S-218-C42W300-1050CG-4W-UNI / S-218-C42W300-1050CG-4G-UNI	300mA	0.08A	14.49W	3.00-12.60W	0.75	87.8%	10-42V	59V
	350mA	0.09A	16.76W	3.50-14.70W	0.78	88.3%	10-42V	59V
	400mA	0.09A	19.02W	4.00-16.80W	0.84	89.0%	10-42V	59V
	450mA	0.10A	21.33W	4.50-18.90W	0.86	89.4%	10-42V	59V
	500mA	0.11A	23.64W	5.00-21.00W	0.87	89.4%	10-42V	59V
	550mA	0.12A	25.95W	5.50-23.10W	0.89	89.6%	10-42V	59V
	600mA	0.12A	28.25W	6.00-25.20W	0.90	89.7%	10-42V	59V
	650mA	0.13A	30.57W	6.50-27.30W	0.91	89.8%	10-42V	59V
	700mA	0.14A	32.92W	7.00-29.40W	0.93	89.9%	10-42V	59V
	750mA	0.15A	35.23W	7.50-31.50W	0.93	90.0%	10-42V	59V
	800mA	0.15A	37.62W	8.00-33.60W	0.93	90.0%	10-42V	59V
	850mA	0.16A	38.15W	8.50-34.00W	0.93	89.7%	10-40V	59V
	900mA	0.17A	40.45W	9.00-36.00W	0.93	89.8%	10-40V	59V
	950mA	0.17A	42.70W	9.50-38.00W	0.94	89.8%	10-40V	59V
	1000mA	0.18A	44.99W	10.00-40.00W	0.94	89.8%	10-40V	59V
1050mA	0.19A	47.24W	10.50-42.00W	0.95	89.9%	10-40V	59V	

* Test result @277V, 50Hz, Full Load

Parameters

Category	Item	Technical Norm
Features	Output Type	Constant Current
	Output Features	Isolation
	IP Grade	IP20
	Insulation Class	Class II (compatible Class I)
Input	Rated Input Voltage	120-277VAC
	Range of Input Voltage	100-305VAC
	Range of DC Input Voltage	180-280VDC
	Frequency	50/60Hz
	Overvoltage protection	2h@380VAC, 48h@320VAC
	Input Current	≤0.41A (120VAC, full load)
	Input Power	≤48.27W (120VAC, full load)
	Power Factor	≥0.99 (120VAC, full load)
	THD	≤10% (120VAC, full load)
	No-load Power Consumption	≤0.50W @230VAC
	Inrush Current	≤9.5A/16us (120VAC, full load)
Connected quantity of 10A Breaker	21pcs/type A ;33pcs/type B ;53pcs/type C@230Vac	
Connected quantity of 13A Breaker	26pcs/type A ;42pcs/type B ;68pcs/type C@230Vac	
Connected quantity of 16A Breaker	33pcs/type A ;53pcs/type B ;84pcs/type C@230Vac	
Connected quantity of 20A Breaker	41pcs/type A ;66pcs/type B ;105pcs/type C@230Vac	
Output	Output Voltage Range	10-42VDC@300-800mA ; 10-40VDC@850-1050mA
	No-load Voltage	59VDC Max.
	Output Current	300mA-1050mA (Max.output) , Factory set current of 300mA
	Max. Output Power	42W
	Efficiency	≥90% (230VAC, full load)
	Output LF current ripple	±5% (Imax-Imin) / (Imax+Imin)
	Current Accuracy	±5%
	Starting Delay Time	≤0.5S@277VAC, ≤1S@120VAC
	Pst LM	≤1
	SVM	≤0.4
Protection	Short Circuit Protection	Auto Recovery
	Overload Protection	Auto Recovery (not be hot swap)
	No-load Protection	Auto Recovery
	Insulation voltage	3000V 5mA 60S between P-S
	Insulation resistance	>100M ohm @ 500VDC
	Leakage current	< 250μA, I/P to O/P or I/P to PE @120V input
Environment	Ta/Operation Temperature	-25....+35 C
	Ts/Storage Temperature	-25....+70 C
	Tc/Enclosure Temperature	70 C
	Humidity	10%....90%RH
	Atmosphere pressure	86-108KPa
Construction	Installation	Independent
	SEC Wire preparation	0.5-1.5 [□]
	Dimension	217.7*3 1.1*42.2 mm (L*W*H)

Standards	Certification	ETL
	Safety Standards	ETL8750
	EMC Standards	FCC PART 15B
	Performance	EN 62384
	Surge	L-N:2kV
Others	RoHs	complied to 2011/65/EU
	Life Time	50000h Tc=70 C
		75000h Tc=65 C
		100000h Tc=60 C
Warranty	5years , F.R. < 10000ppm	

Remark:

- All Parameters, if not specified, are measured at 230VAC/50Hz and 25 C ambient temperature.
- LED Driver is a component of the luminaires, Luminaires and wire layout will affect the EMC, please check the EMC with end products again.

Distance	15m	30m	50m
Cable selection	0.5mm ²	0.75mm ²	1.0mm ²

Output Current Setting

Output Current	1	2	3	4
300mA	-	-	-	-
350mA	-	-	-	ON
400mA	-	-	ON	-
450mA	-	-	ON	ON
500mA	-	ON	-	-
550mA	-	ON	-	ON
600mA	-	ON	ON	-
650mA	-	ON	ON	ON
700mA	ON	-	-	-
750mA	ON	-	-	ON
800mA	ON	-	ON	-
850mA	ON	-	ON	ON
900mA	ON	ON	-	-
950mA	ON	ON	-	ON
1000mA	ON	ON	ON	-
1050mA	ON	ON	ON	ON

Label

BLACK (RAL9011)

<p>LED Driver ta:35°C tc:70°C</p> <p>Intertek 5029159</p> <p>R. Slight B.V. Roald Dahlilaan 47, 5629 MC, Eindhoven</p>				<table border="1"> <thead> <tr> <th>Pout [W]</th> <th>Iout [mA]</th> <th>λ</th> <th>1</th> <th>2</th> <th>3</th> <th>4</th> <th>Pout [W]</th> <th>Iout [mA]</th> <th>λ</th> <th>1</th> <th>2</th> <th>3</th> <th>4</th> </tr> </thead> <tbody> <tr><td>12.6</td><td>300</td><td>0.97</td><td>-</td><td>-</td><td>-</td><td>-</td><td>29.4</td><td>700</td><td>0.98</td><td>ON</td><td>-</td><td>-</td><td>-</td></tr> <tr><td>14.7</td><td>350</td><td>0.97</td><td>-</td><td>-</td><td>-</td><td>ON</td><td>31.5</td><td>750</td><td>0.99</td><td>ON</td><td>-</td><td>-</td><td>ON</td></tr> <tr><td>16.8</td><td>400</td><td>0.98</td><td>-</td><td>-</td><td>ON</td><td>ON</td><td>33.6</td><td>800</td><td>0.99</td><td>ON</td><td>-</td><td>ON</td><td>-</td></tr> <tr><td>18.9</td><td>450</td><td>0.98</td><td>-</td><td>-</td><td>ON</td><td>ON</td><td>34.0</td><td>850</td><td>0.99</td><td>ON</td><td>-</td><td>ON</td><td>ON</td></tr> <tr><td>21.0</td><td>500</td><td>0.98</td><td>-</td><td>ON</td><td>-</td><td>-</td><td>36.0</td><td>900</td><td>0.99</td><td>ON</td><td>ON</td><td>-</td><td>-</td></tr> <tr><td>23.1</td><td>550</td><td>0.98</td><td>-</td><td>ON</td><td>-</td><td>ON</td><td>38.0</td><td>950</td><td>0.99</td><td>ON</td><td>ON</td><td>-</td><td>ON</td></tr> <tr><td>25.2</td><td>600</td><td>0.98</td><td>-</td><td>ON</td><td>ON</td><td>-</td><td>40.0</td><td>1000</td><td>0.99</td><td>ON</td><td>ON</td><td>ON</td><td>-</td></tr> <tr><td>27.3</td><td>650</td><td>0.98</td><td>-</td><td>ON</td><td>ON</td><td>ON</td><td>42.0</td><td>1050</td><td>0.99</td><td>ON</td><td>ON</td><td>ON</td><td>ON</td></tr> </tbody> </table>	Pout [W]	Iout [mA]	λ	1	2	3	4	Pout [W]	Iout [mA]	λ	1	2	3	4	12.6	300	0.97	-	-	-	-	29.4	700	0.98	ON	-	-	-	14.7	350	0.97	-	-	-	ON	31.5	750	0.99	ON	-	-	ON	16.8	400	0.98	-	-	ON	ON	33.6	800	0.99	ON	-	ON	-	18.9	450	0.98	-	-	ON	ON	34.0	850	0.99	ON	-	ON	ON	21.0	500	0.98	-	ON	-	-	36.0	900	0.99	ON	ON	-	-	23.1	550	0.98	-	ON	-	ON	38.0	950	0.99	ON	ON	-	ON	25.2	600	0.98	-	ON	ON	-	40.0	1000	0.99	ON	ON	ON	-	27.3	650	0.98	-	ON	ON	ON	42.0	1050	0.99	ON	ON	ON	ON	<p>S-218-C42W300-1050CG-4B-UNI</p> <p>For LED modules only</p> <p>Constant Current Lighting track adaptors</p> <p>PRI:120VAC 50/60Hz Max. 0.41A Max. 47W</p> <p>SEC:300-800mA 10-42VDC</p> <p>850-1050mA 10-40VDC</p> <p>Uout:59VDC 42W Max. Fmax.50N ↓</p> <p>4. pour réduire le risque d'incendie et de choc électrique, utiliser uniquement avec le système</p>	<p>1. To reduce the risk of fire and electric shock, recommend to use with the track system of model PRO-R4XXX series and PRO-04XXX series manufacture by Dongguan Tian Sheng Optic-Technics Corp.</p> <p>2. DRY LOCATIONS ONLY</p> <p>3. POUR EMPLACEMENTS SECS SEULEMENT</p> <p>+</p> <p>0.5-1.5"</p> <p>8-9mm</p> <p>1 2 3 4 OFF</p>
Pout [W]	Iout [mA]	λ	1	2	3	4	Pout [W]	Iout [mA]	λ	1	2	3	4																																																																																																																							
12.6	300	0.97	-	-	-	-	29.4	700	0.98	ON	-	-	-																																																																																																																							
14.7	350	0.97	-	-	-	ON	31.5	750	0.99	ON	-	-	ON																																																																																																																							
16.8	400	0.98	-	-	ON	ON	33.6	800	0.99	ON	-	ON	-																																																																																																																							
18.9	450	0.98	-	-	ON	ON	34.0	850	0.99	ON	-	ON	ON																																																																																																																							
21.0	500	0.98	-	ON	-	-	36.0	900	0.99	ON	ON	-	-																																																																																																																							
23.1	550	0.98	-	ON	-	ON	38.0	950	0.99	ON	ON	-	ON																																																																																																																							
25.2	600	0.98	-	ON	ON	-	40.0	1000	0.99	ON	ON	ON	-																																																																																																																							
27.3	650	0.98	-	ON	ON	ON	42.0	1050	0.99	ON	ON	ON	ON																																																																																																																							

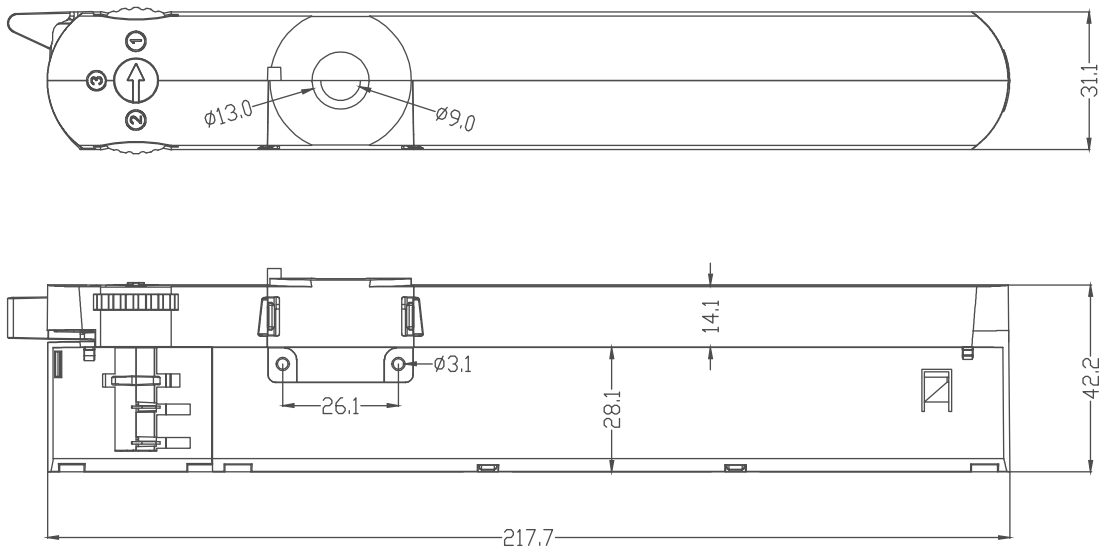
WHITE (RAL9010)

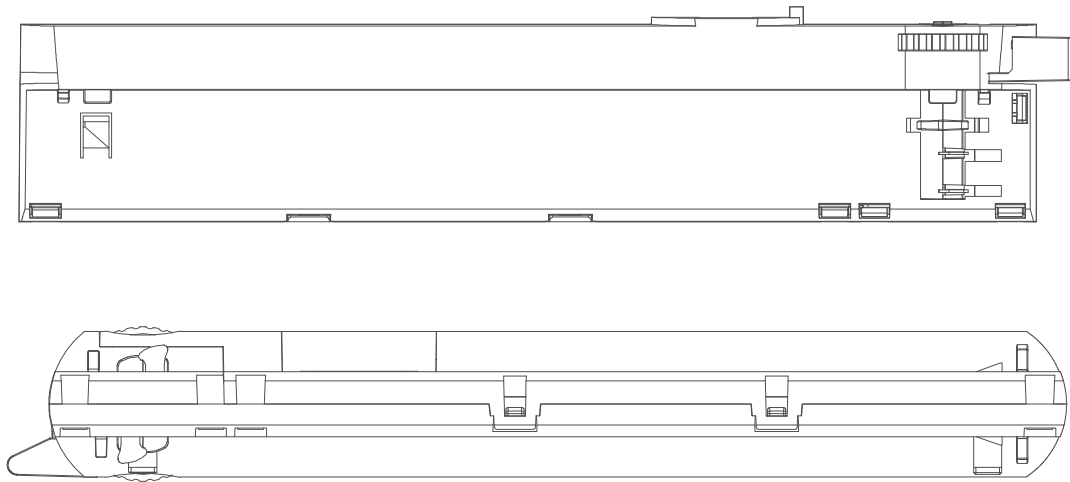
<p>LED Driver ta:35°C tc:70°C</p> <p>Intertek 5029159</p> <p>R. Slight B.V. Roald Dahlilaan 47, 5629 MC, Eindhoven</p>				<table border="1"> <thead> <tr> <th>Pout [W]</th> <th>Iout [mA]</th> <th>λ</th> <th>1</th> <th>2</th> <th>3</th> <th>4</th> <th>Pout [W]</th> <th>Iout [mA]</th> <th>λ</th> <th>1</th> <th>2</th> <th>3</th> <th>4</th> </tr> </thead> <tbody> <tr><td>12.6</td><td>300</td><td>0.97</td><td>-</td><td>-</td><td>-</td><td>-</td><td>29.4</td><td>700</td><td>0.98</td><td>ON</td><td>-</td><td>-</td><td>-</td></tr> <tr><td>14.7</td><td>350</td><td>0.97</td><td>-</td><td>-</td><td>-</td><td>ON</td><td>31.5</td><td>750</td><td>0.99</td><td>ON</td><td>-</td><td>-</td><td>ON</td></tr> <tr><td>16.8</td><td>400</td><td>0.98</td><td>-</td><td>-</td><td>ON</td><td>ON</td><td>33.6</td><td>800</td><td>0.99</td><td>ON</td><td>-</td><td>ON</td><td>-</td></tr> <tr><td>18.9</td><td>450</td><td>0.98</td><td>-</td><td>-</td><td>ON</td><td>ON</td><td>34.0</td><td>850</td><td>0.99</td><td>ON</td><td>-</td><td>ON</td><td>ON</td></tr> <tr><td>21.0</td><td>500</td><td>0.98</td><td>-</td><td>ON</td><td>-</td><td>-</td><td>36.0</td><td>900</td><td>0.99</td><td>ON</td><td>ON</td><td>-</td><td>-</td></tr> <tr><td>23.1</td><td>550</td><td>0.98</td><td>-</td><td>ON</td><td>-</td><td>ON</td><td>38.0</td><td>950</td><td>0.99</td><td>ON</td><td>ON</td><td>-</td><td>ON</td></tr> <tr><td>25.2</td><td>600</td><td>0.98</td><td>-</td><td>ON</td><td>ON</td><td>-</td><td>40.0</td><td>1000</td><td>0.99</td><td>ON</td><td>ON</td><td>ON</td><td>-</td></tr> <tr><td>27.3</td><td>650</td><td>0.98</td><td>-</td><td>ON</td><td>ON</td><td>ON</td><td>42.0</td><td>1050</td><td>0.99</td><td>ON</td><td>ON</td><td>ON</td><td>ON</td></tr> </tbody> </table>	Pout [W]	Iout [mA]	λ	1	2	3	4	Pout [W]	Iout [mA]	λ	1	2	3	4	12.6	300	0.97	-	-	-	-	29.4	700	0.98	ON	-	-	-	14.7	350	0.97	-	-	-	ON	31.5	750	0.99	ON	-	-	ON	16.8	400	0.98	-	-	ON	ON	33.6	800	0.99	ON	-	ON	-	18.9	450	0.98	-	-	ON	ON	34.0	850	0.99	ON	-	ON	ON	21.0	500	0.98	-	ON	-	-	36.0	900	0.99	ON	ON	-	-	23.1	550	0.98	-	ON	-	ON	38.0	950	0.99	ON	ON	-	ON	25.2	600	0.98	-	ON	ON	-	40.0	1000	0.99	ON	ON	ON	-	27.3	650	0.98	-	ON	ON	ON	42.0	1050	0.99	ON	ON	ON	ON	<p>S-218-C42W300-1050CG-4W-UNI</p> <p>For LED modules only</p> <p>Constant Current Lighting track adaptors</p> <p>PRI:120VAC 50/60Hz Max. 0.41A Max. 47W</p> <p>SEC:300-800mA 10-42VDC</p> <p>850-1050mA 10-40VDC</p> <p>Uout:59VDC 42W Max. Fmax.50N ↓</p> <p>4. pour réduire le risque d'incendie et de choc électrique, utiliser uniquement avec le système</p>	<p>1. To reduce the risk of fire and electric shock, recommend to use with the track system of model PRO-R4XXX series and PRO-04XXX series manufacture by Dongguan Tian Sheng Optic-Technics Corp.</p> <p>2. DRY LOCATIONS ONLY</p> <p>3. POUR EMPLACEMENTS SECS SEULEMENT</p> <p>+</p> <p>0.5-1.5"</p> <p>8-9mm</p> <p>1 2 3 4 OFF</p>
Pout [W]	Iout [mA]	λ	1	2	3	4	Pout [W]	Iout [mA]	λ	1	2	3	4																																																																																																																							
12.6	300	0.97	-	-	-	-	29.4	700	0.98	ON	-	-	-																																																																																																																							
14.7	350	0.97	-	-	-	ON	31.5	750	0.99	ON	-	-	ON																																																																																																																							
16.8	400	0.98	-	-	ON	ON	33.6	800	0.99	ON	-	ON	-																																																																																																																							
18.9	450	0.98	-	-	ON	ON	34.0	850	0.99	ON	-	ON	ON																																																																																																																							
21.0	500	0.98	-	ON	-	-	36.0	900	0.99	ON	ON	-	-																																																																																																																							
23.1	550	0.98	-	ON	-	ON	38.0	950	0.99	ON	ON	-	ON																																																																																																																							
25.2	600	0.98	-	ON	ON	-	40.0	1000	0.99	ON	ON	ON	-																																																																																																																							
27.3	650	0.98	-	ON	ON	ON	42.0	1050	0.99	ON	ON	ON	ON																																																																																																																							

GRAY (RAL7040)

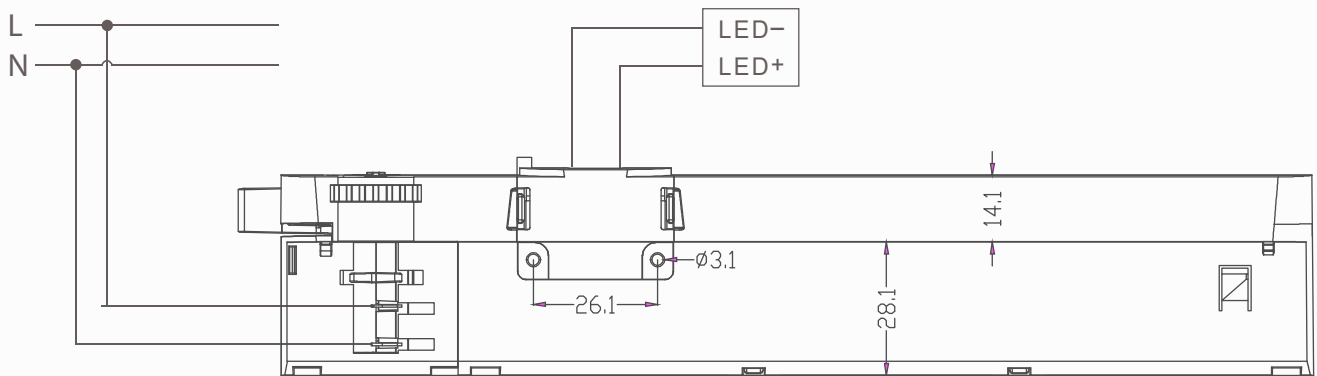
<p>LED Driver ta:35°C tc:70°C</p> <p>Intertek 5029159</p> <p>R. Slight B.V. Roald Dahlilaan 47, 5629 MC, Eindhoven</p>				<table border="1"> <thead> <tr> <th>Pout [W]</th> <th>Iout [mA]</th> <th>λ</th> <th>1</th> <th>2</th> <th>3</th> <th>4</th> <th>Pout [W]</th> <th>Iout [mA]</th> <th>λ</th> <th>1</th> <th>2</th> <th>3</th> <th>4</th> </tr> </thead> <tbody> <tr><td>12.6</td><td>300</td><td>0.97</td><td>-</td><td>-</td><td>-</td><td>-</td><td>29.4</td><td>700</td><td>0.98</td><td>ON</td><td>-</td><td>-</td><td>-</td></tr> <tr><td>14.7</td><td>350</td><td>0.97</td><td>-</td><td>-</td><td>-</td><td>ON</td><td>31.5</td><td>750</td><td>0.99</td><td>ON</td><td>-</td><td>-</td><td>ON</td></tr> <tr><td>16.8</td><td>400</td><td>0.98</td><td>-</td><td>-</td><td>ON</td><td>ON</td><td>33.6</td><td>800</td><td>0.99</td><td>ON</td><td>-</td><td>ON</td><td>-</td></tr> <tr><td>18.9</td><td>450</td><td>0.98</td><td>-</td><td>-</td><td>ON</td><td>ON</td><td>34.0</td><td>850</td><td>0.99</td><td>ON</td><td>-</td><td>ON</td><td>ON</td></tr> <tr><td>21.0</td><td>500</td><td>0.98</td><td>-</td><td>ON</td><td>-</td><td>-</td><td>36.0</td><td>900</td><td>0.99</td><td>ON</td><td>ON</td><td>-</td><td>-</td></tr> <tr><td>23.1</td><td>550</td><td>0.98</td><td>-</td><td>ON</td><td>-</td><td>ON</td><td>38.0</td><td>950</td><td>0.99</td><td>ON</td><td>ON</td><td>-</td><td>ON</td></tr> <tr><td>25.2</td><td>600</td><td>0.98</td><td>-</td><td>ON</td><td>ON</td><td>-</td><td>40.0</td><td>1000</td><td>0.99</td><td>ON</td><td>ON</td><td>ON</td><td>-</td></tr> <tr><td>27.3</td><td>650</td><td>0.98</td><td>-</td><td>ON</td><td>ON</td><td>ON</td><td>42.0</td><td>1050</td><td>0.99</td><td>ON</td><td>ON</td><td>ON</td><td>ON</td></tr> </tbody> </table>	Pout [W]	Iout [mA]	λ	1	2	3	4	Pout [W]	Iout [mA]	λ	1	2	3	4	12.6	300	0.97	-	-	-	-	29.4	700	0.98	ON	-	-	-	14.7	350	0.97	-	-	-	ON	31.5	750	0.99	ON	-	-	ON	16.8	400	0.98	-	-	ON	ON	33.6	800	0.99	ON	-	ON	-	18.9	450	0.98	-	-	ON	ON	34.0	850	0.99	ON	-	ON	ON	21.0	500	0.98	-	ON	-	-	36.0	900	0.99	ON	ON	-	-	23.1	550	0.98	-	ON	-	ON	38.0	950	0.99	ON	ON	-	ON	25.2	600	0.98	-	ON	ON	-	40.0	1000	0.99	ON	ON	ON	-	27.3	650	0.98	-	ON	ON	ON	42.0	1050	0.99	ON	ON	ON	ON	<p>S-218-C42W300-1050CG-4G-UNI</p> <p>For LED modules only</p> <p>Constant Current Lighting track adaptors</p> <p>PRI:120VAC 50/60Hz Max. 0.41A Max. 47W</p> <p>SEC:300-800mA 10-42VDC</p> <p>850-1050mA 10-40VDC</p> <p>Uout:59VDC 42W Max. Fmax.50N ↓</p> <p>4. pour réduire le risque d'incendie et de choc électrique, utiliser uniquement avec le système</p>	<p>1. To reduce the risk of fire and electric shock, recommend to use with the track system of model PRO-R4XXX series and PRO-04XXX series manufacture by Dongguan Tian Sheng Optic-Technics Corp.</p> <p>2. DRY LOCATIONS ONLY</p> <p>3. POUR EMPLACEMENTS SECS SEULEMENT</p> <p>+</p> <p>0.5-1.5"</p> <p>8-9mm</p> <p>1 2 3 4 OFF</p>
Pout [W]	Iout [mA]	λ	1	2	3	4	Pout [W]	Iout [mA]	λ	1	2	3	4																																																																																																																							
12.6	300	0.97	-	-	-	-	29.4	700	0.98	ON	-	-	-																																																																																																																							
14.7	350	0.97	-	-	-	ON	31.5	750	0.99	ON	-	-	ON																																																																																																																							
16.8	400	0.98	-	-	ON	ON	33.6	800	0.99	ON	-	ON	-																																																																																																																							
18.9	450	0.98	-	-	ON	ON	34.0	850	0.99	ON	-	ON	ON																																																																																																																							
21.0	500	0.98	-	ON	-	-	36.0	900	0.99	ON	ON	-	-																																																																																																																							
23.1	550	0.98	-	ON	-	ON	38.0	950	0.99	ON	ON	-	ON																																																																																																																							
25.2	600	0.98	-	ON	ON	-	40.0	1000	0.99	ON	ON	ON	-																																																																																																																							
27.3	650	0.98	-	ON	ON	ON	42.0	1050	0.99	ON	ON	ON	ON																																																																																																																							

Dimension (Unit: mm)



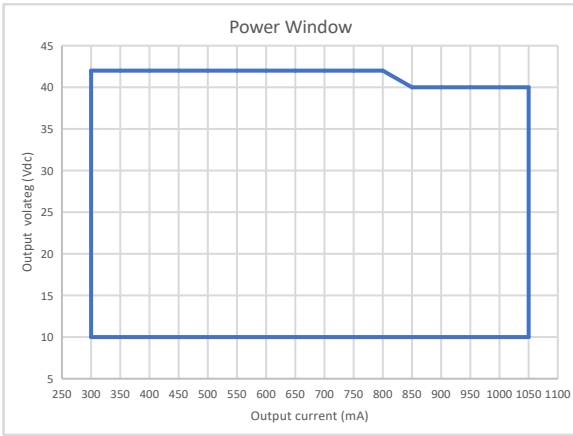


Wiring Diagram

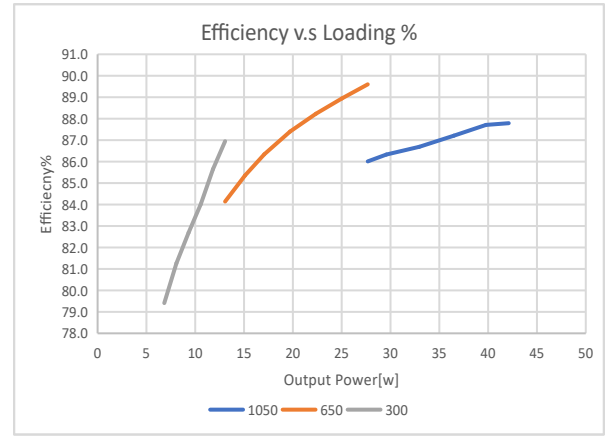


Electrical values

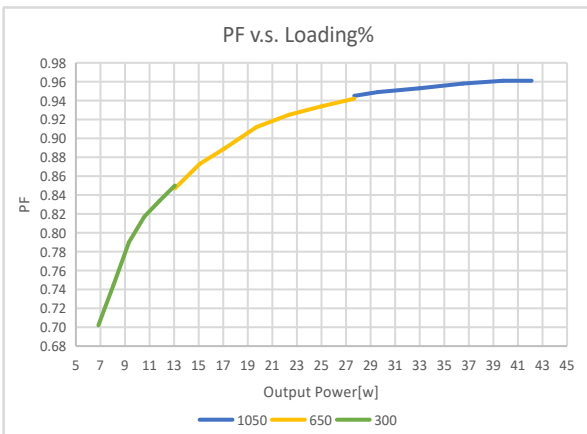
1. Operating power windows



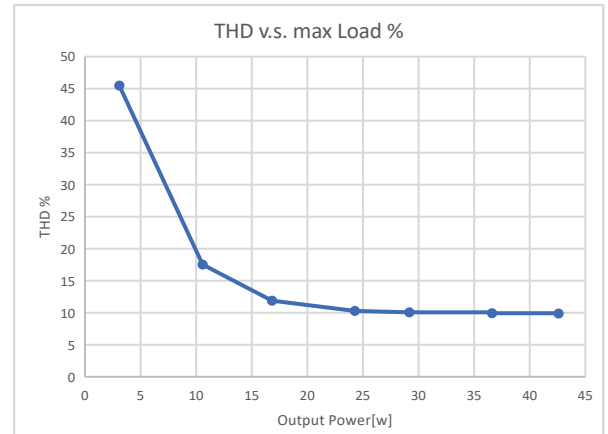
2. Efficiency v.s. Load



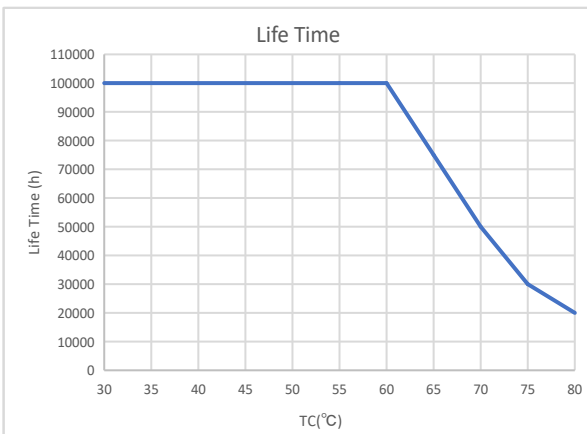
3. PF v.s. Load



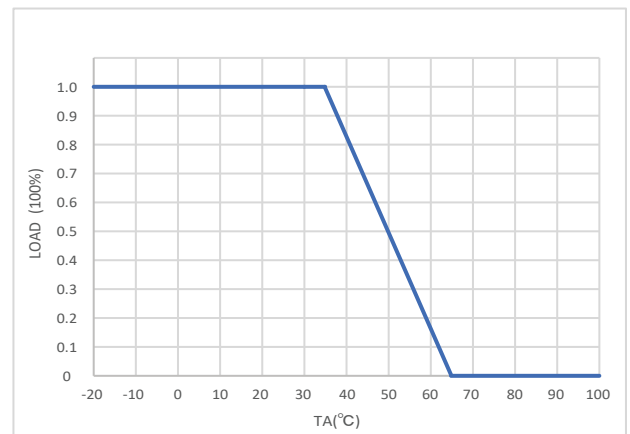
4. THD v.s. Load



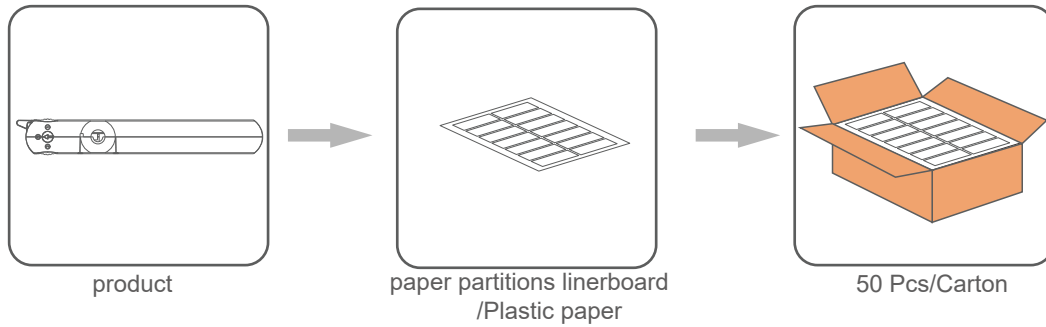
5. Life time



6. Derating



Packing information



Model	Carton L*W*H(mm)	Pcs/- Carton	Net weight/ Pcs(kg)	Net weight/ Carton(kg)	Cross weight/- Carton(kg)
S-218-C42W300-1050CG-4X-UNI	395*295*125	50	0.141	7.06	7.80

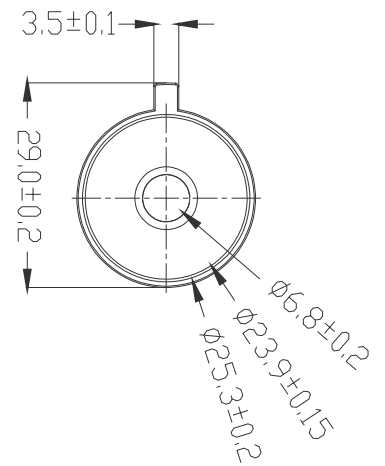
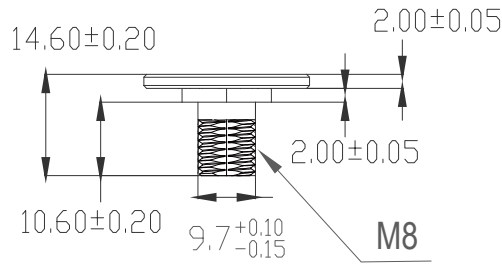
Lamp Screw Type

- Optional threaded sleeve for luminaire mounting
- Suitable for M10x1x8 threaded nut
- Additional mounting equipment, e.g. M10x1x12
- aluminium, black, white
- further on request

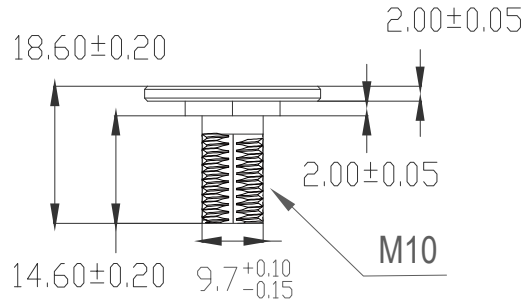
Ordering data 1

Type	Colour	Qty/ctn	Weight/pcs
M10x1x8	White	2500	9.6g
	Black	2500	9.6g
	Grey	2500	9.6g
M10x1x12	White	2500	10.0g
	Black	2500	10.0g
	Grey	2500	10.0g

M10X1X8 (White)



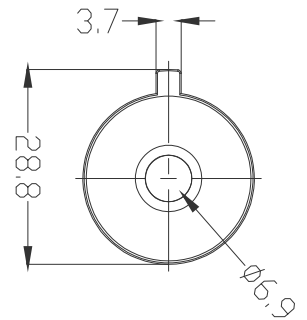
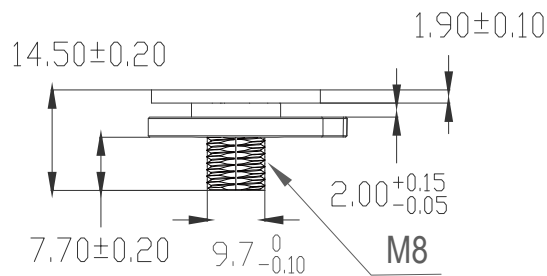
M10X1X12 (White)



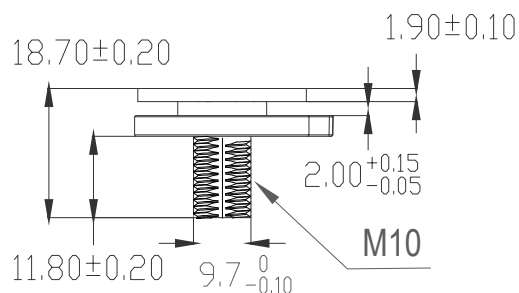
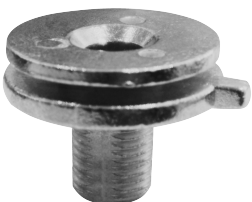
Ordering data 2

Type	Colour	Qty/ctn	Weight/pcs
M10x1x8	White	2500	16.0g
	Black	2500	16.0g
	Primary color	2500	16.0g
M10x1x12	White	2500	16.9g
	Black	2500	16.9g
	Primary color	2500	16.9g

M10X1X8 (Primary color)



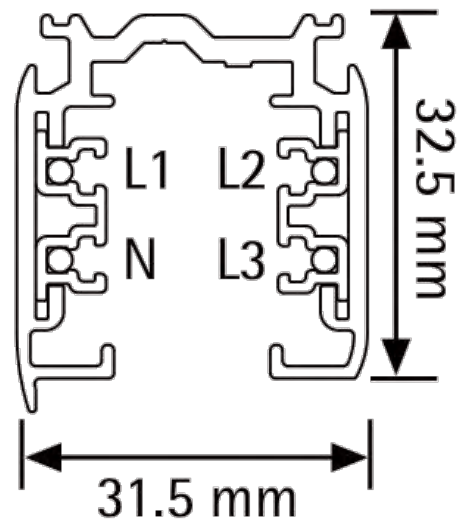
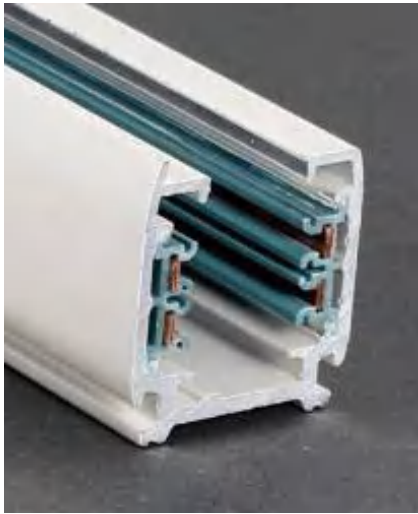
M10X1X12 (Primary color)



Suitable for following tracks

Manufacturer	Type	System	Intrack casing colour
ZUMTOBEL	S280...	3P	Black, white, grey
EUTRAC	25-XX-XX	3P	Black, white, grey
IVELA	7501 /7511	3P	Black, white, grey
LUMISYS UNIPRO	T32 / T33 /34	3P	Black, white, grey
NORDIC ALUMINIUM	GLOBAL Trac Pro XTs 4xxx	3P	Black, white, grey
ERCO	783.	3P	Black, white, grey
SIDE	25101	3P	Black, white, grey
Unipro	T32B	3P	Black, white, grey
Unipro	T32FW	3P	Black, white, grey
iGuzzini	6771-6774	3P	Black, white, grey
iGuzzini	6779-6782	3P	Black, white, grey
Powergear	PRO-04X0	3P	Black, white, grey
Powergear	PRO-0610	3P+DAL	Black, white, grey
Unipro	TC32W	3P+DAL	Black, white, grey
Unipro	TC32FW	3P+DAL	Black, white, grey
NORDIC ALUMINIUM	GLOBAL Trac Pulse XTsc 6xxx	3P+DAL	Black, white, grey
NORDIC ALUMINIUM	GLOBAL Trac Pulse XTSCF 6xxx	3P+DAL	Black, white, grey
Stucchi	One track	3P+DAL	Black, white, grey

Phase track light rail specification:



Lighting track adapter and rail system installation diagram:



The adaptor shall be given that the use is limited to the track system specified.

Wiring instructions

- All connections must be kept as short as possible to ensure good EMI behaviour
- Mains leads should be kept apart from LED Driver and other leads(ideally 5-10 cm distance)
- Advice the maximum length of output wires is 3m
- Secondary switching is not permitted(Except for constant voltage)
- Incorrect wiring can damage LED modules.
- The wiring must be protected against short circuits to earth(sharp edged metals parts,metal cable clips, louver, etc.)

REVISION HISTORY

Date	Revision	Remark